

KAESER
COMPRESSORS®



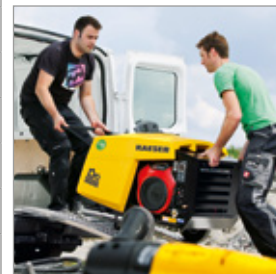
MOBILAIR® Range with CE conformity

Portable compressors with the world-renowned SIGMA PROFILE ⚙️
Delivery volume 1.2 to 48.1 m³/min

www.kaeser.com

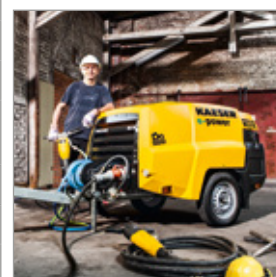
Alternative drives

			e-power		
Model			M 13	M 17	M 13E
Flow rate at working pressure	7 bar	m³/min	1.2	–	1.25
	100 psi	cfm	42		44
	10 bar	m³/min	1.0	–	1.0
	145 psi	cfm	35		35
	13 bar	m³/min	0.85	–	0.85
	175 psi	cfm	30		30
	15 bar	m³/min	–	1.0	0.75
	200 psi	cfm		35	27
Engine / motor			Honda GX 630	Honda GX 630	Siemens
Rated engine / motor power		kW	15.5	15.5	7.5
Compressed air treatment			○	○	○



Compact machines

			e-power					
Model			M 20	M 27	M 30	M 27E	M 31E	M 50E
Flow rate at working pressure	7 bar	m³/min	2.0	2.6	2.9	2.6	3.15	5.0
	100 psi	cfm	71	92	100	92	110	180
	10 bar	m³/min	–	2.1	–	–	2.6	3.8
	145 psi	cfm		74			92	135
	12 bar	m³/min	–	1.9	–	–	2.3	–
	175 psi	cfm		67			81	
	14 bar	m³/min	–	1.6	–	–	1.9	–
	200 psi	cfm		57			67	
Engine / motor			Kubota D722	Kubota D1105	Kubota D1105	Siemens	Siemens	Siemens
Rated engine / motor power		kW	14.7	18.2	18.2	15	22	25
Compressed air treatment			○	○	○	○	○	○
Generator option		kVA	–	6.5	–	–	–	–



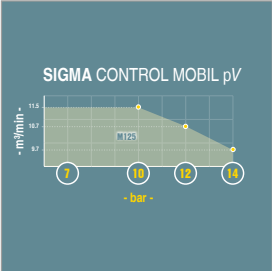
Maximum versatility

Model			M 58utility	M 59	M 65	M 82
Flow rate at working pressure	7 bar	m³/min	5.1	5.5	6.6	8.4
	100 psi	cfm	180	195	230	295
	10 bar	m³/min	4.35	4.7	5.6	6.8
	145 psi	cfm	155	165	195	240
	12 bar	m³/min	–	–	–	6.1
	175 psi	cfm				215
	14 bar	m³/min	–	3.8	4.6	5.5
	200 psi	cfm		135	160	195
Engine			Kubota V2403-CR	Hatz 3H50TICD	Kubota V2403CR-T	Kubota V3307-CR-T
Rated engine power		kW	35.3	43.5	47.9	54.6
Compressed air treatment			○	○	○	○
Generator option		kVA	–	8.5 / 13	–	8.5 / 13



Power packages

Model			M 125		M 171	
Flow rate at working pressure	8.6 bar	m³/min	–		17.0	
	125 psi	cfm			600	
	10 bar	m³/min	11.5	15.5		
	145 psi	cfm	405	550		
	12 bar	m³/min	10.7	13.5		
	175 psi	cfm	380	475		
	14 bar	m³/min	9.7	11.5		
	200 psi	cfm	345	405		
Engine			Deutz TCD 4.1 L04		Deutz TCD 6.1 L06	
Rated engine power kW			105		129	
Compressed air treatment			○		○	
Generator option kVA			13		–	



Large compressors

Large compressors				e-power		
Model			M 255	M 250E	M 255E	
Flow rate at working pressure	8.6 bar	m³/min	26.5	25.0	–	
	125 psi	cfm	950	885		
	10 bar	m³/min	24.8	20.4	24.7	
	145 psi	cfm	875	720	875	
	12 bar	m³/min	–	–	19.9	
	175 psi	cfm			705	
	14 bar	m³/min	19.7	16.2	–	
	200 psi	cfm	695	570		
Engine / motor			Cummins B6.7	Siemens	Siemens	
Rated engine / motor power			kW	210	132	160
Compressed air treatment			○	○	○	

